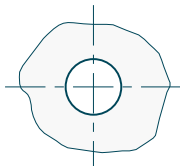
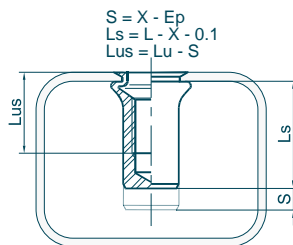
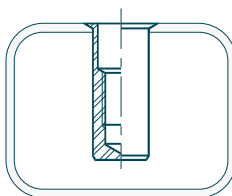
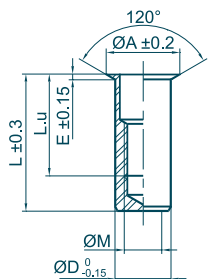


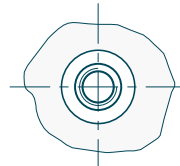
Écrous à sertir en aveugle Blind Rivet Nuts



Material : Aluminium Matière : Aluminium
 Head : Flush Tête : Affleurante
 Body : Round Fût : Cylindrique
 Body end : Closed End Extrémité du fût : Borgne



Outillages de pose
Fastening tools
se référer à / refer to
TOOLIN'FIX



Ø M	Ep		Code	mm ØT	Ø A	L	L.u	E	Ø D	X indicative data	daN		N.m		kg x1000
	min	max													
M2.5 x 0.45	0.0 - 1.1		01U025ARB011X	4.0	4.6	9.7	5.6	0.3	4.0	2.4	165	0.6	0.6	0.2	
	0.8 - 1.7		01U025ARB017X	4.0	4.6	10.3	6.5	0.3	4.0	3.0	165	0.6	0.6	0.2	
M3 x 0.50	0.0 - 1.1		01U030ARB011X	5.0	5.8	11.9	6.7	0.3	5.0	2.4	225	0.8	0.8	0.4	
	1.0 - 2.3		01U030ARB023X	5.0	5.8	13.1	8.2	0.3	5.0	3.6	225	0.8	0.8	0.4	
	2.1 - 3.2		01U030ARB032X	5.0	5.8	13.8	8.7	0.3	5.0	4.7	225	0.8	0.8	0.4	
M4 x 0.70	3.0 - 4.1		01U030ARB041X	5.0	5.8	14.7	9.6	0.3	5.0	5.6	225	0.8	0.8	0.4	
	0.0 - 1.3		01U040ARB013X	6.0	6.8	15.1	8.5	0.3	6.0	2.6	400	1.9	1.9	0.7	
	0.5 - 3.0		01U040ARB030X	6.0	6.8	16.7	10.1	0.3	6.0	4.3	400	1.9	1.9	0.7	
	1.8 - 4.2		01U040ARB042X	6.0	6.8	18.0	11.4	0.3	6.0	5.5	400	1.9	1.9	0.7	
M5 x 0.80	3.5 - 5.5		01U040ARB055X	6.0	6.8	19.5	12.9	0.3	6.0	6.8	400	1.9	1.9	0.7	
	0.0 - 1.5		01U050ARB015X	7.0	8.0	16.8	10.5	0.4	7.0	3.0	650	3.8	3.2	0.9	
	0.0 - 2.5		01U050ARB025X	7.0	8.0	17.8	11.5	0.4	7.0	4.0	650	3.8	3.2	1.0	
	0.5 - 3.5		01U050ARB035X	7.0	8.0	19.3	13.0	0.4	7.0	5.0	650	3.8	3.2	1.0	
M6 x 1.00	1.5 - 4.5		01U050ARB045X	7.0	8.0	20.3	14.0	0.4	7.0	6.0	650	3.8	3.2	1.1	
	0.0 - 1.5		01U060ARB015X	9.0	10.0	21.3	12.5	0.4	9.0	3.4	1100	6.7	6.0	2.2	
	1.0 - 3.5		01U060ARB035X	9.0	10.0	23.3	14.5	0.4	9.0	5.4	1100	6.7	6.0	2.3	
	2.0 - 4.5		01U060ARB045X	9.0	10.0	24.3	15.5	0.4	9.0	6.4	1100	6.7	6.0	2.3	
M8 x 1.25	3.0 - 5.5		01U060ARB055X	9.0	10.0	25.3	16.5	0.4	9.0	7.4	1100	6.7	6.0	2.4	
	4.0 - 6.5		01U060ARB065X	9.0	10.0	26.3	17.5	0.4	9.0	8.4	1100	6.7	6.0	2.4	
	0.0 - 1.8		01U080ARB018X	11.0	12.0	24.2	13.7	0.4	11.0	3.7	1750	16.2	10.5	3.4	
	0.0 - 3.0		01U080ARB030X	11.0	12.0	25.4	14.9	0.4	11.0	4.9	1750	16.2	10.5	3.4	
	1.3 - 4.2		01U080ARB042X	11.0	12.0	26.7	16.2	0.4	11.0	6.2	1750	16.2	10.5	3.5	
	2.0 - 5.0		01U080ARB050X	11.0	12.0	27.5	16.8	0.4	11.0	6.9	1750	16.2	10.5	3.7	
M10 x 1.50	3.5 - 6.5		01U080ARB065X	11.0	12.0	28.5	18.0	0.4	11.0	8.4	1750	16.2	10.5	3.7	
	0.0 - 3.2		01U100ARB032X	13.0	14.5	31.9	21.4	0.6	13.0	6.0	2200	32	16.4	5.6	
	2.0 - 5.5		01U100ARB055X	13.0	14.5	34.4	23.0	0.6	13.0	8.3	2200	32	16.4	5.9	
	3.0 - 6.5		01U100ARB065X	13.0	14.5	35.4	24.0	0.6	13.0	9.3	2200	32	16.4	6.0	
M12 x 1.75	4.5 - 7.5		01U100ARB075X	13.0	14.5	36.4	25.0	0.6	13.0	10.3	2200	32	16.4	6.1	
	0.0 - 4.2		01U120ARB042X	16.0	17.5	36.3	23.7	0.6	16.0	7.3	3000	55	23.5	9.8	
	2.0 - 6.0		01U120ARB060X	16.0	17.5	38.2	25.6	0.6	16.0	9.1	3000	55	23.5	10.1	
	3.5 - 7.6		01U120ARB076X	16.0	17.5	39.7	27.0	0.6	16.0	10.7	3000	55	23.5	10.3	
M14 x 2.00	6.0 - 9.2		01U120ARB092X	16.0	17.5	41.3	28.5	0.6	16.0	12.3	3000	55	23.5	10.5	
	0.0 - 3.0		01U140ARB030X	18.0	19.5	41.6	27.6	0.6	18.0	7.0	3600	89	31.5	14.0	
	1.0 - 5.0		01U140ARB050X	18.0	19.5	43.6	29.6	0.6	18.0	9.0	3600	89	31.5	14.4	
	3.0 - 7.0		01U140ARB070X	18.0	19.5	45.6	31.6	0.6	18.0	11.0	3600	89	31.5	14.9	
M16 x 2.00	6.0 - 9.0		01U140ARB090X	18.0	19.5	47.6	33.6	0.6	18.0	13.0	3600	89	31.5	15.3	
	0.0 - 3.2		01U160ARB032X	21.0	22.5	44.1	27.2	0.6	21.0	8.2	5900	139	41	20.2	
	0.0 - 5.7		01U160ARB057X	21.0	22.5	46.5	29.6	0.6	21.0	10.7	5900	139	41	20.8	
	2.0 - 8.2		01U160ARB082X	21.0	22.5	48.9	32.0	0.6	21.0	13.2	5900	139	41	21.5	
	6.0 - 11.0		01U160ARB110X	21.0	22.5	51.9	34.7	0.6	21.0	16.0	5900	139	41	22.2	

Écrou à sertir en aveugle correspondant à l'ancienne désignation M ... fB ... ALUMINIUM
 Blind Rivet Nuts corresponding to old designation M ... fB ... ALUMINIUM